

MEQNET SMBG Viewer 2.0 Installation Guide

Introduction

Thank you for using MEQNET SMBG Viewer (hereinafter, the Software). MEQNET SMBG Viewer, data management software for glucose meter, is intended for use by health care professionals for viewing, printing and output reports by various formats. This Installation Guide contains information on how to install to your PC.

Read carefully prior to starting up the Software.

Definition

Definition in the Installation Guide and operation procedure

Select	To select an item or icon on the screen by touching.
Start	To start application including the Software.
Click	To click the left button of the mouse once.
Double-click	To click the left button of the mouse twice.

• Words

The Software	This operating manual calls "MEQNET SMBG Viewer" the Software.
Meter	Small blood glucose meter specified by ARKRAY Available meter: GT-7110,GT-7120,GT-7210
Cable	USB cable for data transfer (micro B male)
<Screen name>	Screen names are enclosed in <>.
<Main menu> screen	The first screen that appears when starting the Software.
[Button name]	Command button names are enclosed in [].
BGM	Stands for Self-Monitoring Blood Glucose.
POC	Stands for Point of Care Testing.
HCP	Healthcare Professional

Before using the Software

- Do not change database for the Software using database editing software other than the Software.
- The Software is subject to change without notice.

1 Overview

1.1 What can be done with the Software

Main features of the Software

- Receiving, saving and analyzing blood glucose data saved in the meter specified by ARKRAY.
- Changing meter settings, initializing and deleting data.
- Displaying and printing analyzed data in various table and line chart.
- Auto-printing received and saved data in previously-set forms. Auto-outputting PDF files.

1.2 Operating environment

Operating environment for the Software

CPU	1 GHz or more (1.5 GHz or more for Atom processor. Core™i series or later is recommended.)
Memory	2 GByte or more
Available OS	32/64Bit version Windows® 7 / 8 / 8.1/10 (excluding Windows® RT, Windows® RT 8.1) *Windows® is a registered trademark of Microsoft Cooperation in the United States and/or other countries.
HDD	4GByte or more space (full capacity 32GByte or more)
Resolution	1366 x 768 or more
Other	Interface: USB port x 1 or more, mouse, keyboard Recommended environment: Wireless (IEEE802.11a/b/g/n, Bluetooth 4.0) Internet connection

2 Installation of the Software

2.1 Installation

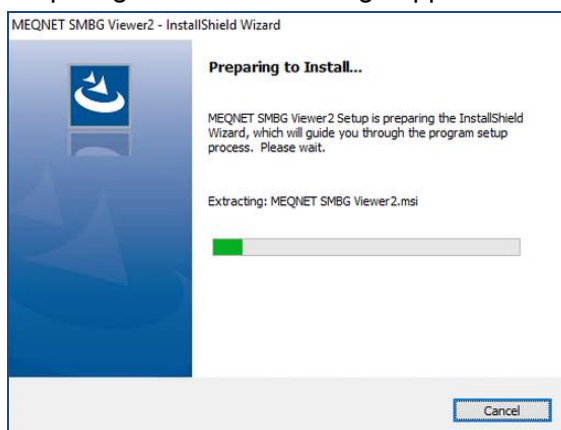
Follow the procedures below before installing the Software.

Download the installation program from the website to an appropriate folder on the computer.

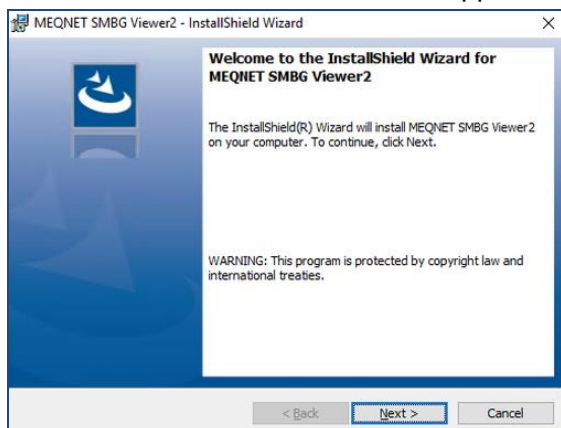
*Close all running software and antivirus software before starting installation.

●Steps

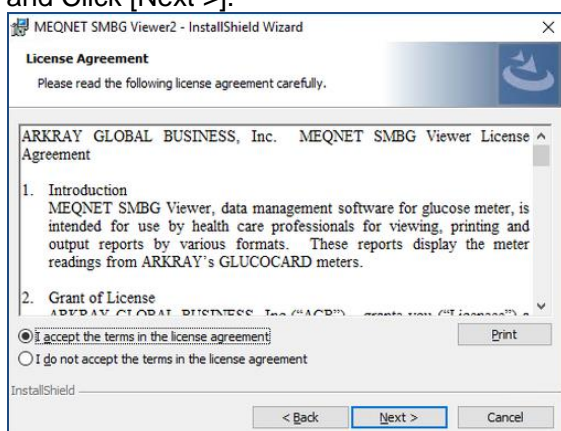
1. See a folder that contains the installation program using “Explorer” or “My Computer”. Double-click the installer file (e.g., “SMBGViewerBGM_V2204.exe”).
2. Preparing installation message appears. Please wait.



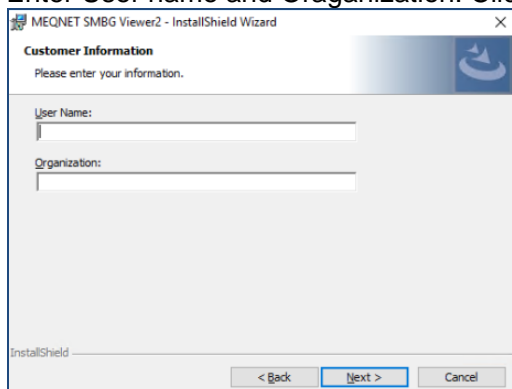
3. Installation screen for the Software appears. Click [Next>].



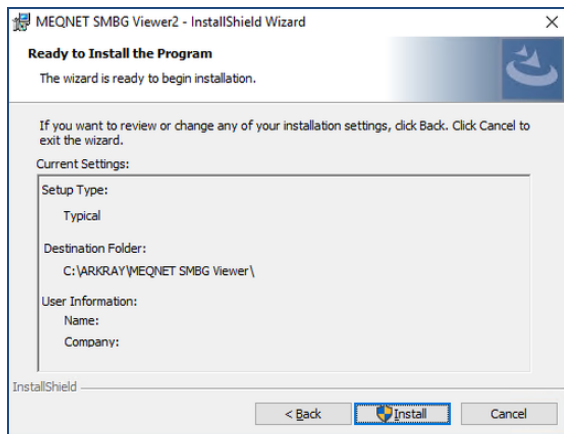
4. License Agreement screen appears. If you agree, check "I accept the terms in the license agreement" and Click [Next >].



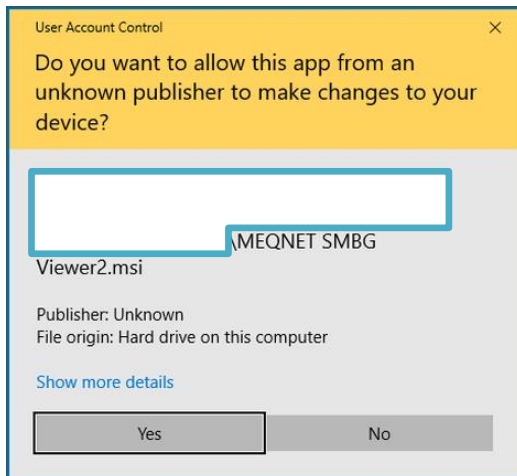
5. Enter User name and Organization. Click [Next >].



6. Click [Install] to start installation.



*If User account control screen appears. Click [Yes].



7. Completion message appears after installation. Click [Finish].



8. The Software has been installed.

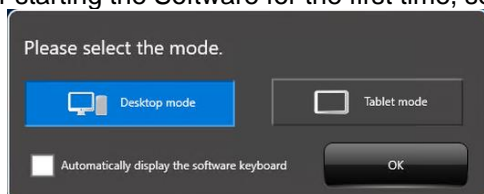
3 Start and end of the Software

3.1 How to start

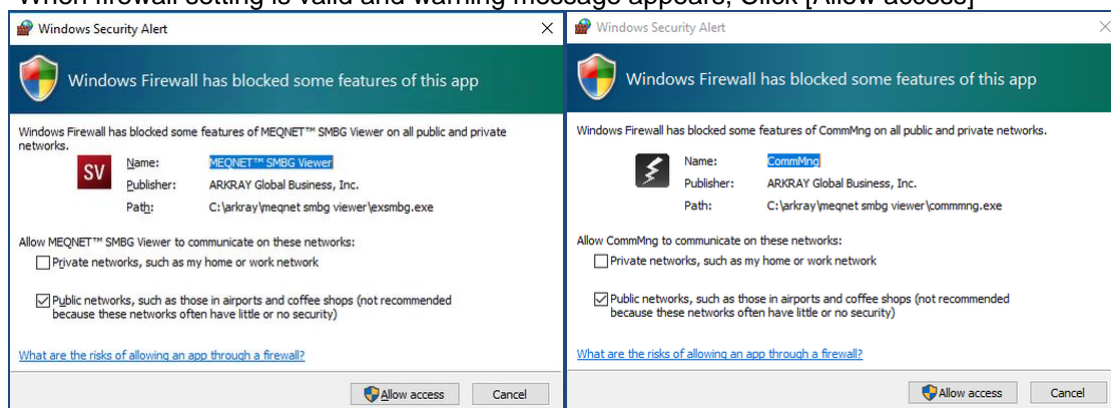
1. Double-click the MEQNET SMBG Viewer icon on desktop or select [Start] -> [All programs] -> [MEQNET SMBG Viewer]
 - Starting from the icon on the desktop



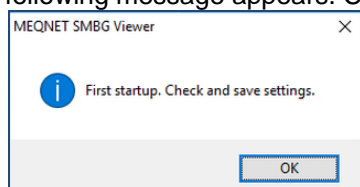
2. After starting the Software for the first time, select [Desktop mode]. Click [OK].



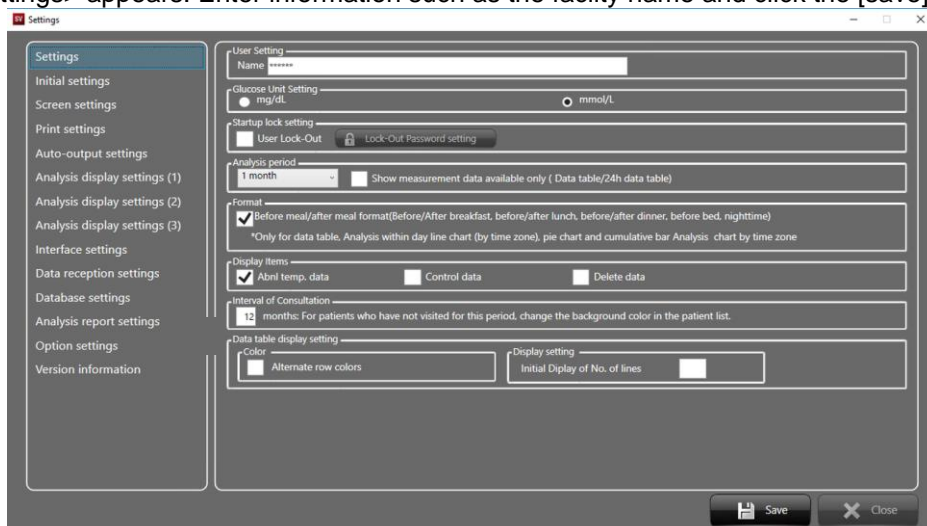
*When firewall setting is valid and warning message appears, Click [Allow access]



3. The following message appears. Click [OK.]



4. <Settings> appears. Enter information such as the facility name and click the [save].



<Main menu>



5. Click [Quit] on <Main menu> for updating Settings.

-E.O.D-¹

¹ First Issue 2017.7.3